

**FLOWERS WITH A DIFFERENCE**  
 FIRST on our list of events for lovers is **Transcending Boundaries** at **Pace Gallery** in Mayfair. It's a sexy idea for a show – digital technology in the art world – and the artists/animators/graphic designers who make up teamLab have created a virtual waterfall and ocean waves through the gallery space. The viewer's body is used as a canvas for the projections. Our tip is to wear something white if possible, to allow the **Flowers Bloom on People** installation, right, to show freely on your body. It's an unusual way to bring blooms to your Valentine – and romance into your life.  
 ■ Free entry, but please pre-book at [eventbrite.co.uk](http://eventbrite.co.uk)



**ARTISTRY IN RESIDENCE**

Here's where to take a lover with a passion for art for Valentine's Day

Kate Gordon



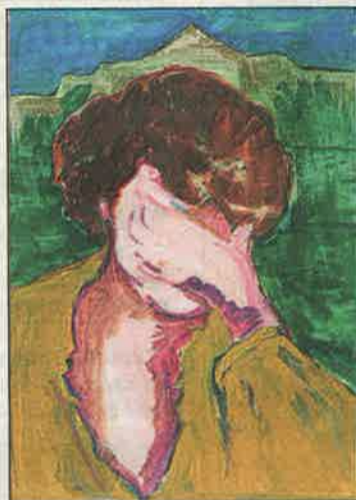
**Push the button:** Identity by Elina Solomonov, among artworks celebrating multiculturalism

**ART FROM A VENDING MACHINE**  
 IF VERY small boxes tied with ribbon aren't quite your style, then why not surprise your Valentine with a piece of art from a vending machine at **Hoxton Square Bar & Kitchen**? It's the second year for this east London group show, which explores multiculturalism and immigration, and their effects on creativity in Britain. Both cash and card are accepted for the vending machine, and the artworks, rolled up in holders inside it, appear at the push of a button. Prices from £20.  
 ■ The Vending Machine Art Gallery, a free exhibition, runs until March 25 ([hoxtonsquarebar.com](http://hoxtonsquarebar.com))

**CLOCK THE ROCKS**  
 ARTIST Tracey Emin's jewellery, designed with Stephen Webster for Net-a-Porter, is the perfect mail order Valentine's gift. Or how about a piece by art world favourite **James Taffin de Givenchy**? The jeweller, nephew of Hubert, creator of Audrey Hepburn's unique style, is known for highly sculptural designs, left, in unexpected materials from rubber to the steel of recycled AK-47s. With deliveries to your door, there's no excuse for forgetting the big day.  
 ■ [net-a-porter.com](http://net-a-porter.com); [taffin.com](http://taffin.com)



**ROMANCE IS NOT DEAD**  
 PRE-VALENTINE'S dates don't come much quirkier than this: how about taking your loved one to an art show at **Kensal Green Cemetery**? The permanent resting place of Harold Pinter, Freddie Mercury and Isambard Kingdom Brunel is showing work by a range of emerging female artists throughout this year. The first



**Haunted Beauty:** Fall from Grace by emerging artist Nadine Talalla

show, **Haunted Beauty**, by Nadine Talalla, will have a private viewing for Homes & Property readers on Friday, from 6.30-8.30pm. RSVP [vickycaplin@btinternet.com](mailto:vickycaplin@btinternet.com) for admission.  
 ■ The Dissenters' Gallery, 391 Ladbroke Grove, W10; nearest Tube station is Kensal Green ([dissentersgallery.com](http://dissentersgallery.com))

**MAGPIE TENDENCIES UNDER THE MICROSCOPE**  
 ONLY a minute's walk from Buckingham Palace, the **Delfina Foundation** is a real insider's secret. The building houses up-and-coming artists – literally, in rooms above the gallery space, below right. Past talents encouraged by the foundation include Mark Wallinger and Chantal Joffe. Invitations to Delfina's family lunches, right, of about 30 people, are much sought-after. And now, with a new show, the foundation is investigating the **Psychology of Collecting**. As Aaron Cezar, director of Delfina notes: "Whether it's contemporary art or vintage shoes, we all have an obsessive tendency to collect. Our programme is interested in the social value of these objects as collections, and the narratives that they tell us about us as a society."  
 ■ [delfinafoundation.com](http://delfinafoundation.com)



**'THE HEIGHTS'**  
**360° BARKING**

360°  
 BARKING

1 bed apartments from £295,000 / 2 bed apartments from £360,000



**Phase 2 launching this week**

3 minutes walk from Barking Station  
 15 minutes by C2C to the City  
 17 minutes by train to Canary Wharf  
 High specification and concierge service

Private balconies to each apartment  
 Stunning roof gardens with panoramic views  
 Unbeatable value in one of London's major regeneration zones

Join us for the launch on 2nd February 4pm-8pm

Hamptons International, UK House, 180 Oxford Street (entrance off Great Titchfield Street), London W1D 1NN



Book your appointment now  
 Call 020 3369 0157 or visit [www.360barking.co.uk](http://www.360barking.co.uk)



Image shows a computer generated artist impression. Prices correct at the time of being published. Travel times taken from tfl.gov.uk